



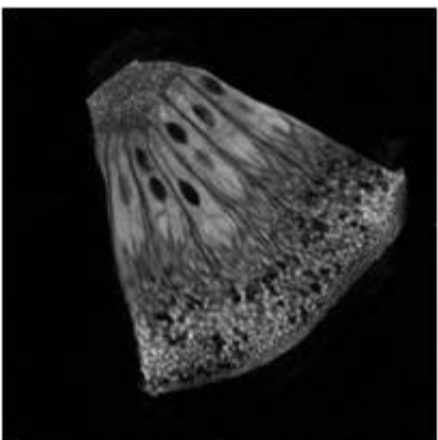
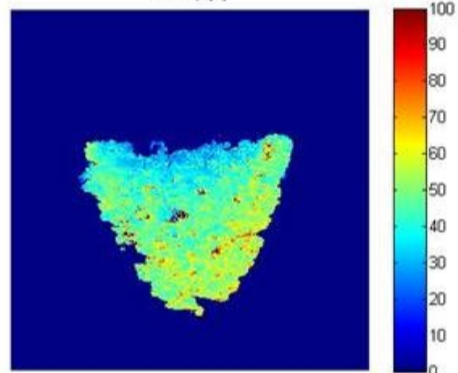
**International  
Summer  
School**  
on Biotechnology



# Summer School on Magnetic Resonance in Food Science

**July 1-4, 2014**  
**Alghero, Sardinia (Italy)**

R2 map [s]



The Summer School on Magnetic Resonance in Food Science will provide both hands-on and theoretical classes, and a series of keynote lectures (open seminars). Students will be hands-on trained to improve their theoretical and technical skills, thanks to the continuous interaction with MRI and NMR applications specialists and well-recognized scientists. Keynote lectures will be open also to experienced researchers willing to attend.

Open seminars will have the double purpose of disseminating most relevant and recent findings in NMR methods applied to food characterization, and generate discussion between teachers, students and other attending researchers involved in a wide array of application fields.

NMR-MRI facilities available at Porto Conte Ricerche are fully equipped with proper instrumentation for food analysis, being the research center highly specialized in supporting enterprise toward the developing of molecular traceability systems for agro-food products and diagnostic systems for human and animal health.

The hands-on classes will be held by Porto Conte Ricerche researchers highly experienced and skilled in the field of magnetic resonance in food science.

## The Research Center



*Porto Conte Ricerche is a Research Organization driving the Sardinian Science and Technology Park of Alghero, Italy. The research center is funded by the Sardinian Government ([www.portocontericerche.it](http://www.portocontericerche.it)). Porto Conte Ricerche's main purposes include the promotion of enterprises innovation and knowledge development in the fields of applied biotechnologies, paying special attention to food science and food technology.*



## Course Venue and Contacts

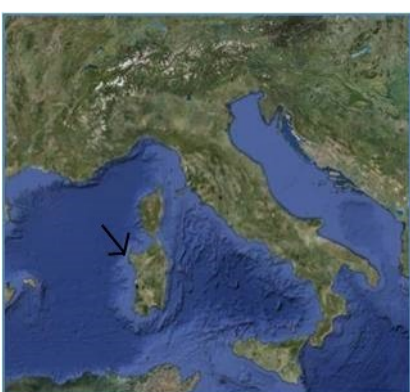
Porto Conte Ricerche Centre

S.P. 55 Porto Conte-Capo Caccia Km 8,400, Loc. Tamariglio,

07041 Alghero (SS) - Italy

phone + 39 079 998400 - fax + 39 079 998567

[summerschool@portocontericerche.it](mailto:summerschool@portocontericerche.it) [www.portocontericerche.it](http://www.portocontericerche.it)



**Porto Conte  
Ricerche**



**SARDEGNA  
RICERCHE**